



HEIZEY
— 汉哲门窗 —

CASEMENT DOOR

Installation Steps



01 Goods Arrival and Unpacking Preparation

Upon receipt of the door products, place them horizontally on a flat surface and open the packaging to inspect:

1. Whether the frame is damaged or dented;
2. Whether any accessories are missing;
3. Whether the overall frame dimensions match the required specifications.

Note: Avoid using sharp metal objects when opening the packaging to prevent damage to the surface coating of the frame.



02 Re-measuring

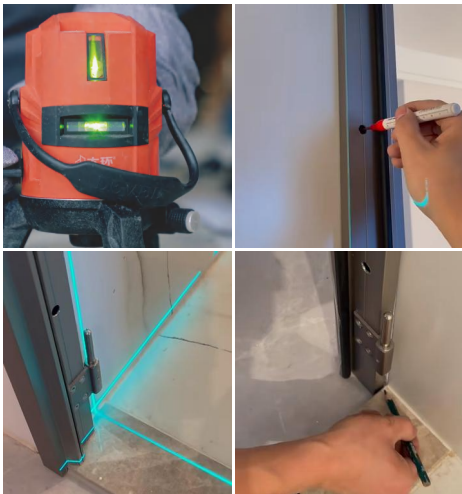
Use standard measuring tools (tape measure, ruler, etc.) to measure the wall opening again and verify the measurement results against the drawing data to determine if they are consistent.

Note: If the measurements match, proceed with the standard installation process; if they do not match, immediately stop construction, identify and resolve the issue before continuing.

03 Opening Cleaning

Use professional cleaning tools to clean the opening, ensuring that the surface of the wall opening is free of debris. Any remaining sand or dust should be less than 8 mesh in size.





04 Marking the Installation Position of the Door Frame on the Opening

The installation position of the door frame must be clearly marked on the opening. When marking:

1. Use a water-based marker and avoid oil-based markers, as these can be difficult to remove;
2. The number of marking points should meet construction requirements, with at least 8 points recommended (4 above and 4 below) for positioning the door frame;
3. The upper, lower, left, and right marking points must be strictly aligned vertically and horizontally. Any errors should be corrected immediately to avoid large gaps between the frame and the opening.

05 Securing the Frame with Screws

Use professional screws (or expansion screws) to securely fix the frame in the opening:

1. For standard screws:

- ① Accurately determine the screw positions, then use an electric drill to create holes at these locations;
- ② Insert the screws into the pre-set holes, then tighten them with a wrench or screwdriver until firmly fixed to the frame.

2. For expansion screws:

- ① Pre-drill holes in the frame using a drilling machine;
- ② Insert the expansion screws, but do not tighten initially;
- ③ Use a wrench or screwdriver to gradually tighten the screws until they expand and press firmly against the wall of the hole;
- ④ Finally, continue tightening until the screws are securely fastened to the frame.





06 Applying Foam Sealant

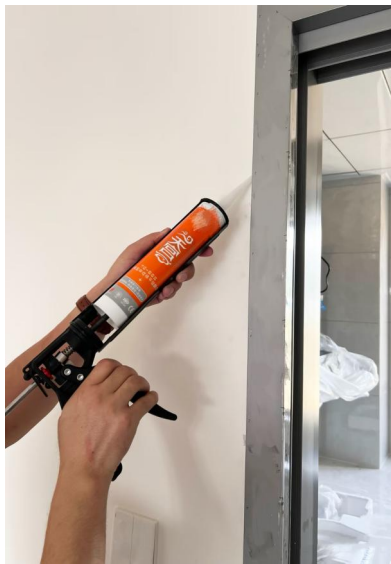
Use foam sealant to fill the gaps between the frame and the opening:

1. Before the foam cures, gently press it into the gaps by hand;
2. Before the foam cures, use a sharp blade to trim any excess that affects appearance;
3. Retain a foam thickness of about 2mm and use a damp cloth or tissue to gently wipe the sealing area to enhance the adhesive strength;
4. Carefully press the foam nozzle along the sealing area until the foam surface is smooth and flawless.

07 Sealing Operations with Sealant

Apply a sealant such as silicone or polyurethane to seal the frame. The steps are as follows:

1. Based on the measured dimensions, cut a sealing strip that matches the gap size and keep it straight.
2. Use alcohol or another cleaning agent to wipe the surface of the door frame to remove dust and other impurities.
3. Place the sealing strip along the door frame on the wall according to the gap size. Hold it in place with one hand and use scissors with the other hand to trim any excess.
4. Apply sealant evenly to the sealing strip. The thickness of the sealant should be moderate—not too thick or too thin.
5. Fold the sealing strip, then use one hand to press it onto the door frame, while pressing down from the other side with your other hand.
6. Continue covering the door frame with the sealing strip, following the same steps, until the entire frame is covered.
7. Clean up any residual sealant to keep the appearance tidy and attractive.



08 Installing Hinges

Select appropriate hardware (hinges) based on the weight and size of the door leaf. As designated installation slots have already been reserved, the hinges can be easily installed on both the door leaf and the door frame. After installation, it is necessary to verify the accuracy of the hinge positions and secure them with screws.



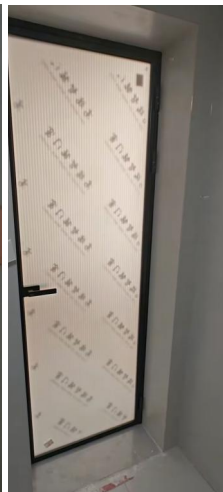
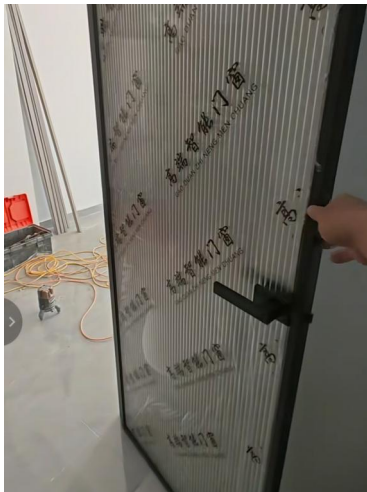


09 Installing the Door Leaf

When installing the door leaf, check and reinforce the door frame once again before installing the movable door leaf. Use tools such as a screwdriver for fine adjustments during installation to ensure the gap between the door leaf and the frame is even and smooth.

10 Door Panel Adjustment

Check whether the door leaf can open and close smoothly, and whether there is any abnormal noise.





11 Lock Adjustment

Inspect and assess the lockset on the door leaf:

1. Check for any visible defects;
2. Confirm proper installation;
3. Ensure it latches securely;
4. Ensure it operates smoothly when opened.

12 Final Self-Inspection

Conduct a final inspection of the door leaf:

1. Confirm the appearance is aesthetically pleasing;
2. Ensure all details are properly adjusted;
3. Check that the frame is securely fastened;
4. Confirm the handle turns smoothly;
5. Ensure the lockset closes and opens properly.





13 Site Cleanup

After completion of construction, clean up the worksite.